

C.Sedum shaoakouense S.S. Ying

Sedum shaoakouense S.S. Ying, *sp. nov.* 小埡口佛甲草

TYPE:TAIWAN. Taichung City,Hoping District (和平區) , Shaoakou (小埡口) 1850 m alt. *S. S. Ying* , *s.n. June 17, 2021* ° (holotype , NTUF) °



Fig. 122. *Sedum shaoakouense* S. S. Ying, flowering plants

Morphology : Perennial erect herbs, usually forming a mass clustered; rhizome elongate, 5-9 cm long, horizontal, fleshy, stems sprout from it; roots slender, fibrous; stems simple, erect to ascending, 5-12 cm long, fleshy, purplish red, glabrous. Leaves simple, opposite, closely approach each other, ovate to oblong, 4-7 mm long, 3-4.5 mm wide, obtuse to acute at apex, attenuate to obtuse at base, fleshy, pale green tinged brown surface and purplish red beneath, entire, glabrous on both surfaces, midrib and laterals inconspicuous on both surfaces. Petioles 3-4 mm long, glabrous, fleshy.

Flowers several, yellow, 8-12 mm in diameter when opened, scentless, in terminal to



Fig. 123. *Sedum shaoakouense* S. S. Ying, plants in Winter

upward leaf-axils solitary to 2-3 flowered spike; peduncles 1-2 cm long, somewhat fleshy, purplish, glabrous; pedicels 0; bracts linear, 3-4 mm long, about 1 mm wide; obtuse at apex, glabrous; sepals 5, smaller, linear, 3-4 mm long, about 2 mm wide, obtuse at apex, dark green, glabrous; petals 5, lanceolate, 8-10 mm long, 2-3 mm wide, acuminate and with needle-tip at apex, truncate at apex,



Fig. 124. *Sedum shaoakouense* S. S. Ying, plants in Spring



Fig. 125. *Sedum shaoakouense* S. S. Ying, mind flowering buds



Fig. 126. *Sedum shaoakouense* S. S. Ying, inflorescences



Fig. 127. *Sedum shaoakouense* S. S. Ying, flowers



Fig. 128. *Sedum shaoakouense* S. S. Ying, mind spicate inflorescence and small sepals

yellow tinged with red at apex, glabrous on both surfaces; stamens 10, 5 fertilized, 5 stamoides; filaments slender, as long as or slightly shorter than petals, yellow; anthers rounded, 0.5 mm long and wide, purplish red; stamoides ones with and without anthers (the anthers usually smaller); nectar scales opposite, 0.5-0.6 mm across, emarginate at apex; carpels 5, red, free, connate at base, oblong, 3-3.5 mm long, glabrous; styles slender, 5-6 mm long, yellowish.

Fruit a follicle, cylindrical, 4.5-5.0 mm long, red, needle tip at apex, opened when mature, subtended by persistent sepals; seeds numerous, rounded or nearly so, 0.3-0.4 mm across, smooth, glabrous.

Diagnosis.

Sedum shaoakouense is characterized by:

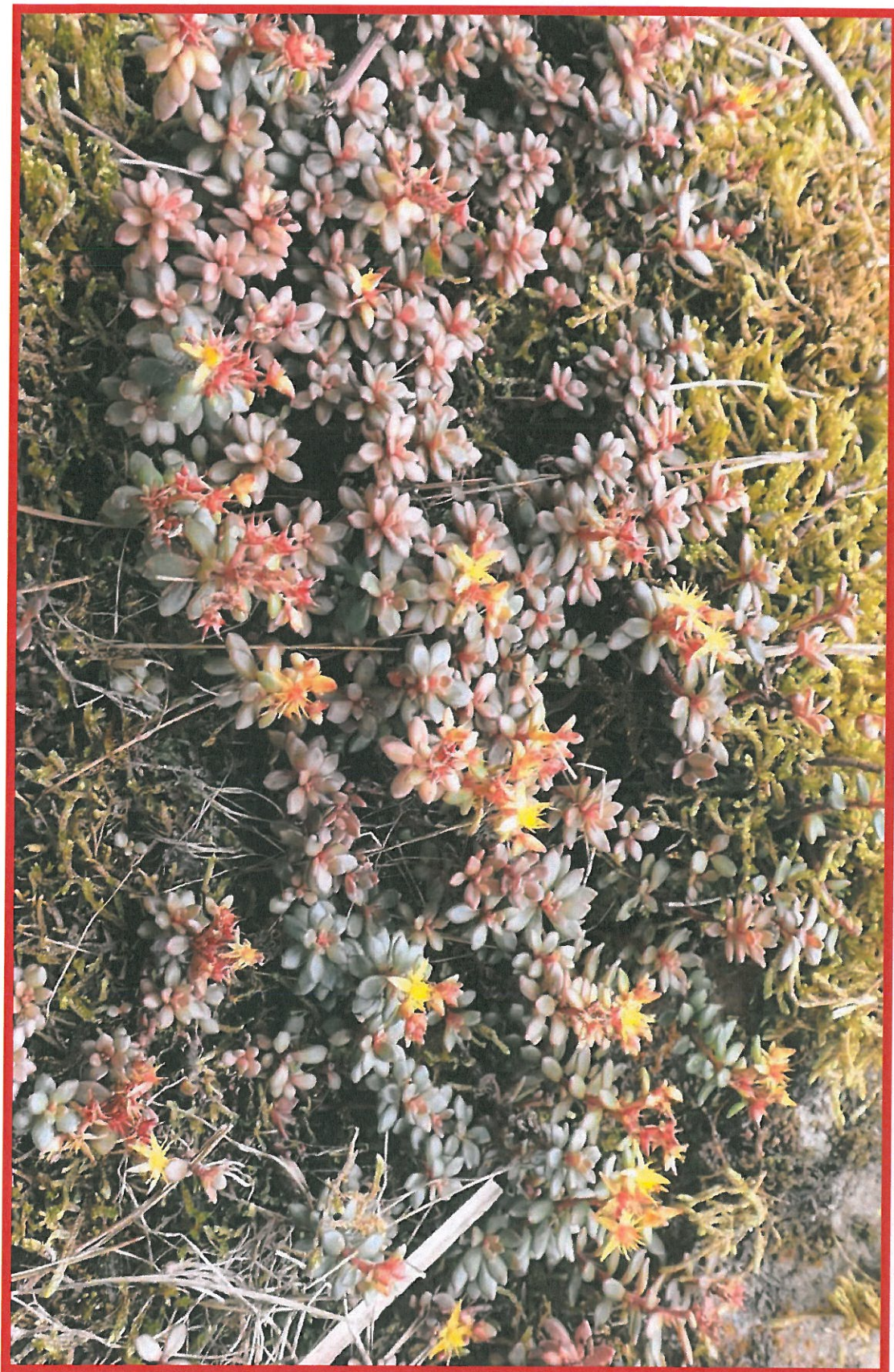
1. Perennial erect herbs, usually forming a mass clustered; rhizome elongate, 5-9 cm long, horizontal, fleshy, stems sprout from it.
2. Leaves simple, opposite, closely approach each other, ovate to oblong, 4-7 mm long,



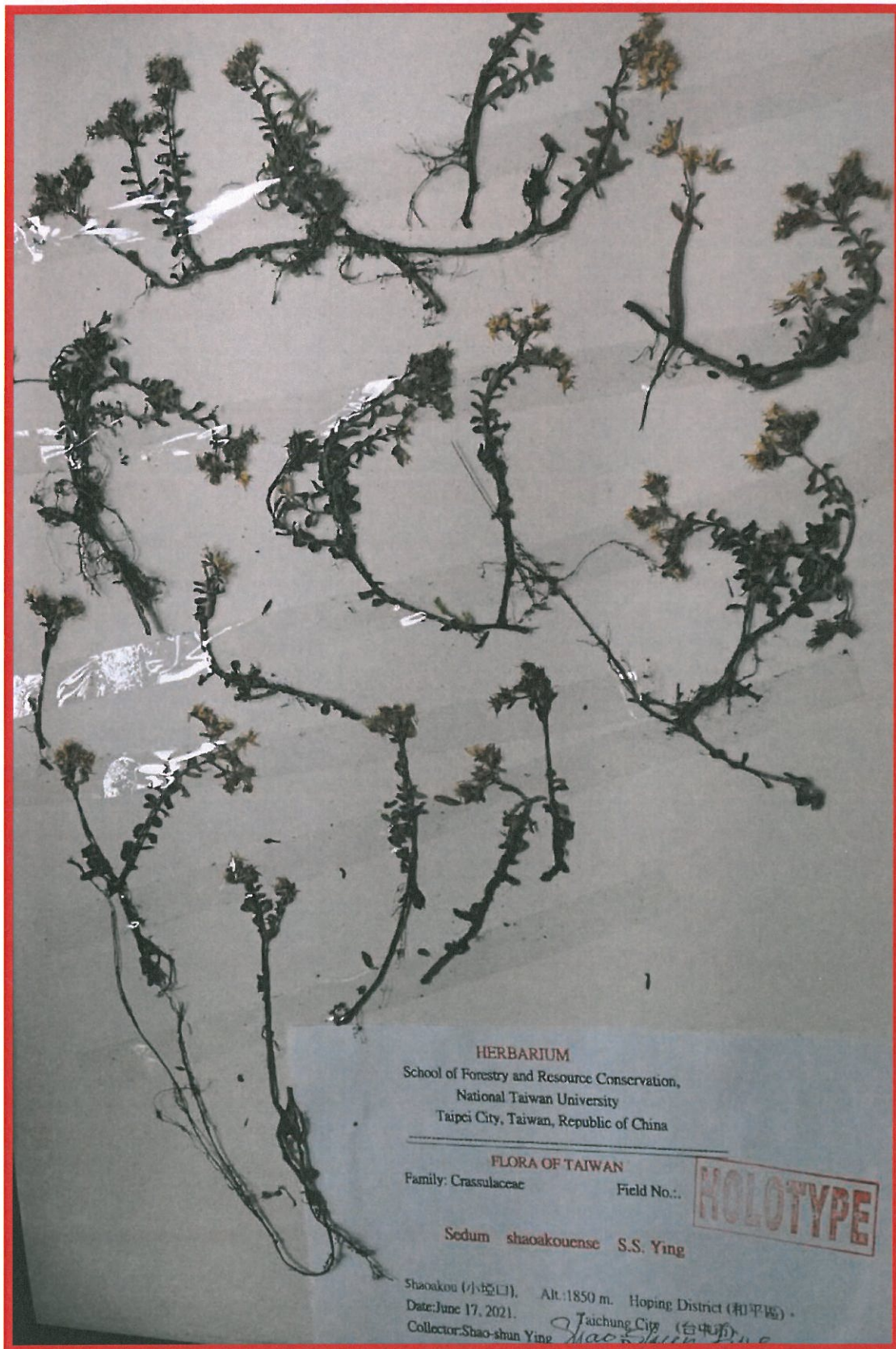
Fig. 129. *Sedum shaoakouense* S. S. Ying, close-up of fruits



-103- Fig. 130. *Sedum shaoakouense* S. S. Ying, plants in Winter



-104- Fig. 131. *Sedum shaoakouense* S. S. Ying, the plants



-105- Fig. 132. *Sedum shaoakouense* S. S. Ying, the holotype NTUF-110-019.

3-4.5 mm wide, obtuse to acute at apex, attenuate to obtuse at base, fleshy.

3. Flowers several, yellow, 8-12 mm in diameter when opened in terminal to upward leaf-axils solitary to 2-3 flowered spike.

4. Stamens 10, 5 fertilized, 5 stamoides; filaments slender, as long as or slightly shorter than petals, yellow;

5. Fruit a follicle, cylindrical, 4.5-5.0 mm long, red, needle tip at apex, opened when mature, subtended by persistent sepals.

Distribution and phenology.

Sedum shaoakouense S.S. Ying is endemic to Taiwan. It is known from Shaoakou (小埤口) area, about 1850 m elevation, Hoping District (和平區), on mountain slope, Taichung City, Central Taiwan. and flowering time from May to July, and Fruiting in July to September

