

B.Sedum nanshanchunense S.S. Ying

Sedum nanshanchunense S.S. Ying, *sp. nov.* 南山村佛甲草

TYPE:TAIWAN. I-lan county , Tatung Township (大同鄉) , Nanshanchun (南山村) 1155 m alt.
S. S. Ying , *s.n. June 5, 2021* ° (holotype, NTUF) °



Fig. 114. *Sedum nanshanchunense* S. S. Ying, the flowering plant

Morphology : Perennial creeping herbs, roots slender, fibrous; stem creeping, much branched, purplish, white hairy; branches spreading, usually rooting at nodes, purplish, white hairy. Leaves simple, opposite, ovate to rounded, 8-13 mm long, 5-7 mm wide, obtuse at apex, obtuse to rounded at base, fleshy, entire and ciliate at margins, lustrous green and scattered white spots (small waxy matters) surface, pale green beneath; shortly hairy on both surfaces, midrib and lateral veins inconspicuous on both surfaces; petioles 3-5 mm long, green, white hairy all over.



Fig. 115. *Sedum nanshanchunense* S. S. Ying, branches and leaves, mind rooting at nodes



Fig. 116. *Sedum nanshanchunense* S. S. Ying, branches and leaves,



Fig. 117. *Sedum nanshanchunense* S. S. Ying, close-up of flowers

Flower solitary, terminal or on axil of the upward leaf, white, 5-6 mm in diameter when opened, scentless; pedicels 8-15 mm long, purplish red, white hairy; sepals 5, free, smaller, linear, 3.2-3.8 mm long, about 2 mm wide, acuminate to obtuse at apex, membranous, hairy outside, persistent when fruit; petals 5, oblong to ovate-oblong, 4-7 mm long, 3-3.5 mm wide, white, obtuse at apex, attenuate at base, glabrous on both surfaces; stamens 5, opposited to petals; filaments slender, shorter than the petals; anthers yellow, rounded or nearly so, 0.4 mm across; nectar scales



Fig. 118. *Sedum nanshanchunense* S. S. Ying, close-up of one flower



Fig. 119. *Sedum nanshanchunense* S. S. Ying, close-up of fruits

opposite, 0.4-0.5 mm across, emarginate at apex; carpels 5, white, free, connate at base, oblong, 4-5 mm long, glabrous; styles short, 0.6 mm long.

Fruit a follicle, cylindrical, 3.2-3.8 mm long, brownish, opened when mature, subtended by persistent sepals; seeds numerous, rounded or nearly so, 0.3 mm across, smooth.

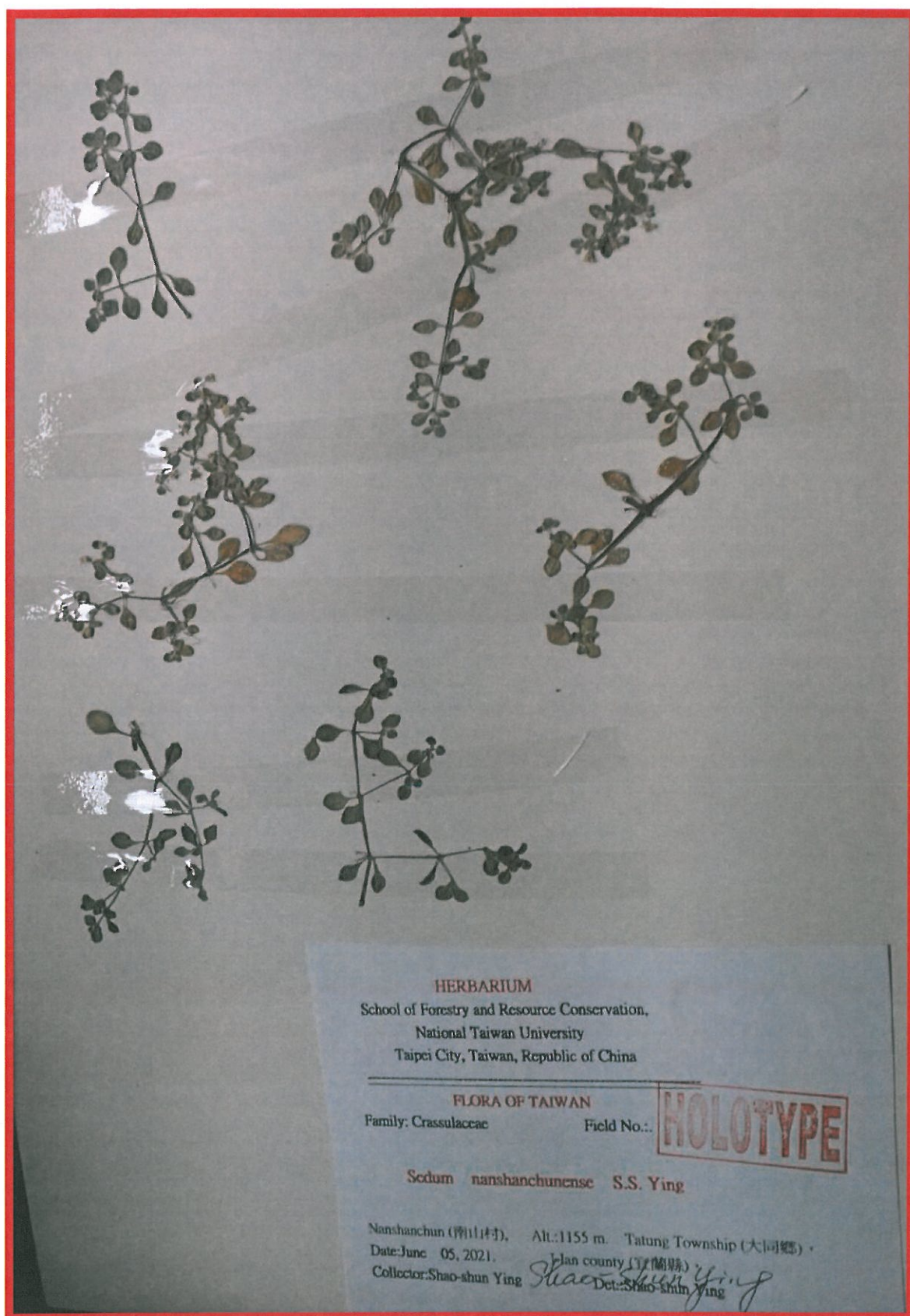


Fig. 120. *Sedum nanshanchunense* S. S. Ying, close-up of fruits

Diagnosis.

Sedum nanshanchunense is characterized by:

1. Stem creeping on ground, branches spreading, all purplish red in color and densely white hairy. .
2. Leaves smaller, ovate to rounded, fleshy, scattered short hairy on both surface, ciliate at margins, lustrous green and scattered white spots (small waxy matters) surface.
3. Flower solitary, white, the only species with white flowers among Taiwan *Sedum* species.



-97- Fig. 121. *Sedum nanshanchunense* S. S. Ying, the holotype NTUF-110-018.

4. Fruit a follicle, cylindrical, 3.2-3.8 mm long, brownish, opened when mature, subtended by persistent sepals.

Distribution and phenology.

Sedum ^{*nanshanchuense*} ~~*eirenianum*~~ S.S. Ying is endemic to Taiwan. It is known from Nanshanchun (南山村) area, about 1155 m elevation, Tatung Township (大同鄉), on cliff of limestones, I-lan county, Northern Taiwan. and flowering time from May to June, and Fruiting in July.

