

D.Sedum shengkuangense S.S. Ying

Sedum shengkuangense S.S. Ying, *sp. nov.* 勝光佛甲草

TYPE:TAIWAN. Taichung City,Hoping District (和平區) , Shengkuang (勝光) 1670 m alt. *S. S. Ying* , *s.n.* July 15, 2021 . (holotype , NTUF) .

Morphology : Annual smaller, erect herbs, roots fibrous, slender; stems simple to branched at base, erect to ascending, 3-6 cm long, fleshy, green tinged with purplish red, glabrous. Leaves simple, opposite, spatulate, 6-10 mm long, 3-5 mm wide, obtuse at apex, attenuate at base, fleshy, lustrous greensurface and pale green beneath, entire, glabrous on both surfaces, midrib and laterals inconspicuous on both surfaces. Petioles 2-3 mm long, glabrous, fleshy.

Flowers solitary, yellow, 4-6 mm in diameter when opened, scentless, terminal on the very shorter branchlets; branchlets 6-10 mm long, fleshy, green tinged with purplish, glabrous; pedicels 0; bracts ovate, 2-3 mm long, about 1.5 mm wide; obtuse at apex, glabrous; sepals 5, smaller, ovate- linear, 2.5-3.5 mm long, about 2-2.5 mm wide, obtuse at apex, green , glabrous;



Fig. 133 *Sedum shengkuangense* S. S. Ying, plants colony



-107- Fig. 134 *Sedum shengkuangense* S. S. Ying, close-up of leaves



Fig. 135. *Sedum shengkuangense* S. S. Ying, flower solitary on branchlet apex



Fig. 136. *Sedum shengkuangense* S. S. Ying, close-up of flower, mind a smaller plant
-108-



Fig. 137. *Sedum shengkuangense* S. S. Ying, close-up of flower,



petals 5, ovate-lanceolate, 6-7 mm long, 2-3 mm wide, acuminate at apex, truncate at base, yellow, glabrous on both surfaces; stamens 10, all fertilized; filaments slender, slightly shorter than petals, 4-5 mm long, yellow; anthers rounded, 0.3 mm long and wide, brownish; nectar scales opposite, 0.3-0.4 mm across, emarginate at apex; carpels 5, yellow, free, connate at base, cylindrical, 4-4.5 mm long, glabrous; styles slender, 0.5-0.6 mm long, yellowish; stigma disc-like, pale yellow.

Fruit a follicle, cylindrical, 3.5-4.0 mm long, pale brown, mucro tip at apex, opened when mature; seeds numerous, rounded or nearly so, 0.25-0.3 mm across, smooth, glabrous.



Fig. 139. *Sedum shengkuangense* S. S. Ying, close-up of fruits

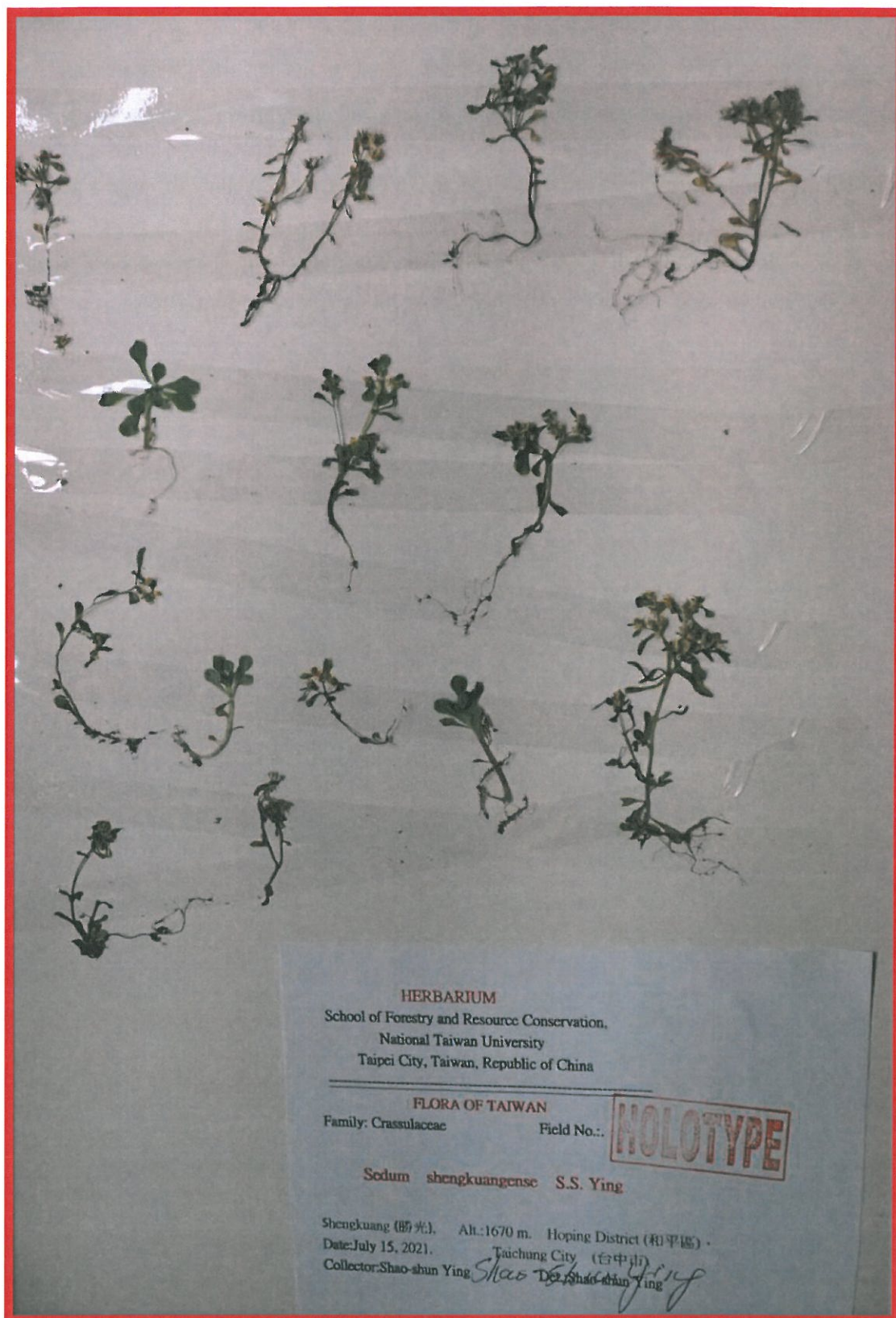


Fig. 140. *Sedum shengkuangense* S. S. Ying, the holotype NTUF-110-020.



Fig. 141. *Sedum shengkuangense* S. S. Ying, plant colony

Diagnosis.

Sedum shengkuangense is characterized by:

1. The plants usually grow with mossy rocks at sunny mountain slope.
2. Annual smaller, erect herbs, stems simple to branched at base, 3-6 cm long, fleshy, green tinged with purplish red, glabrous.
3. Leaves simple, opposite, spatulate, 6-10 mm long, 3-5 mm wide, obtuse at apex, attenuate at base, fleshy.,
4. Flowers solitary, yellow, 4-6 mm in diameter when opened, terminal on the very shorter branchlets.
5. Petals 5, ovate-lanceolate, 6-7 mm long, 2-3 mm wide, acuminate at apex, truncate at base, yellow, glabrous on both surfaces; stamens 10, all fertilized. _

Distribution and phenology.

Sedum shengkuangense S.S. Ying is endemic to Taiwan. It is known from Shengkuang (勝光) area, about 1670 m elevation, Hoping District (和平區), on mountain slope, Taichung City, Central Taiwan. and flowering time from April to July, and Fruiting in July to September

